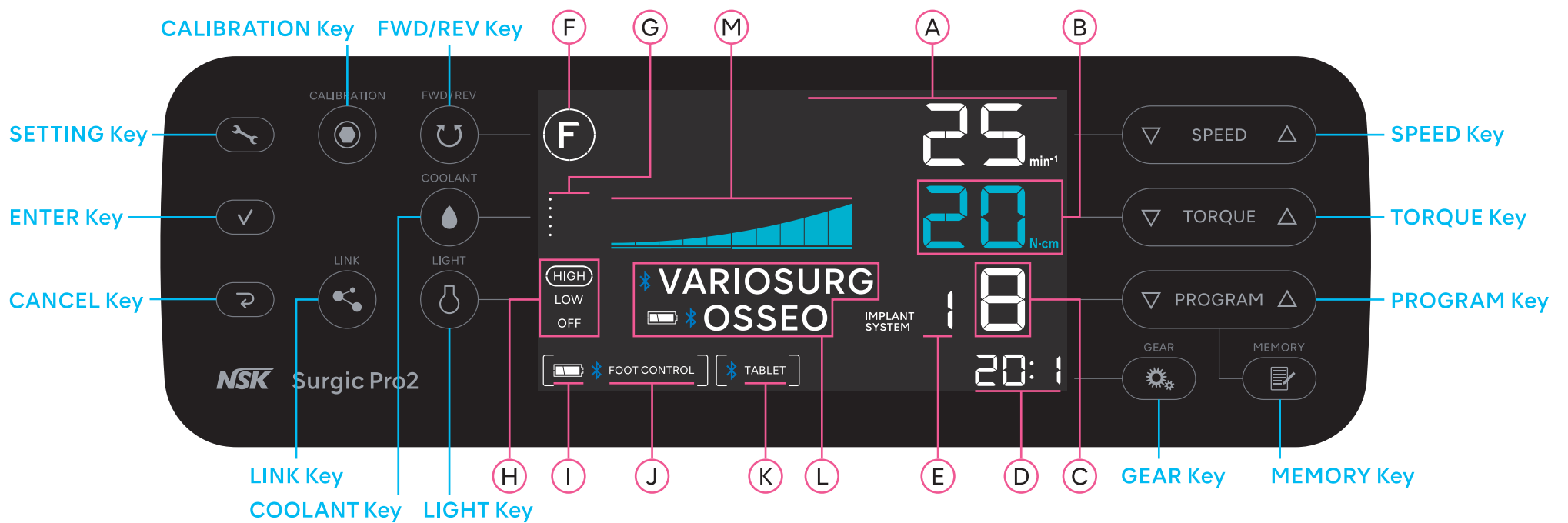
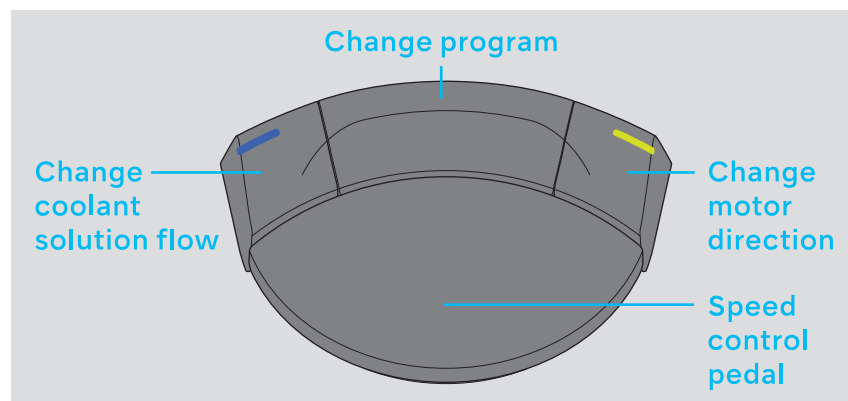


## Control panel



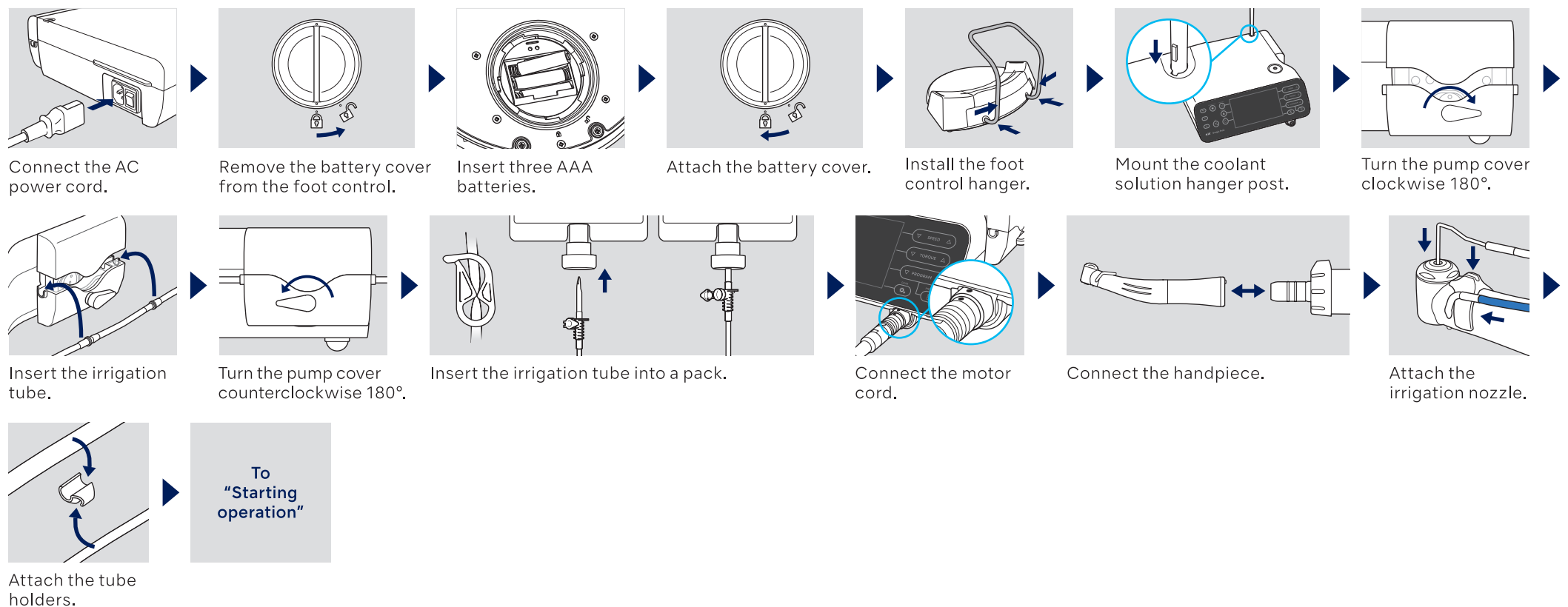
## Foot control



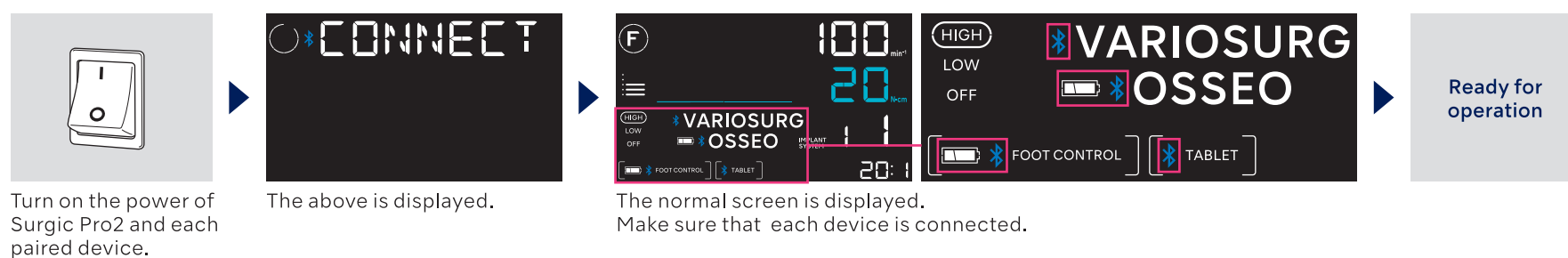
A	Rotation speed
B	Torque
C	Program No.
D	Gear ratio
E	Implant system No.
F	Rotation direction
G	Coolant solution flow level
H	Light level

I	Battery level of the foot control
J	Status of connection between the foot control
K	Status of connection between an external terminal and the control unit
L	Status of connection between VarioSurg 3 / VarioSurg 4 and Osseo 100+
M	Current operating torque level

## Preparation for Use



## Starting operation



The first step after purchase (Pairing with each device)

1

At least 2 sec.

2

3

Press and hold the SETTING Key. "BLE SET" is displayed.

Press the ENTER Key.

Press the TORQUE Key to select the device.  
NOTICE : The letters on the screen except "BLE SET" and "PAIRING" flash on and off.

Foot control

PAIRING FC

Osseo 100+

PAIRING OS

VarioSurg 3

PAIRING LK

VarioSurg 4

PAIRING LK

External terminal

PAIRING PC

Press the ENTER Key.

▼ Foot control

This operation is not necessary when using Surgic Pro2 for the first time after purchase. If the foot control is unpaired or when using another foot control newly purchased, conduct the following operation. NOTICE : Pairing can be done within 10 minutes after inserting the battery.

Approx. 10 sec.

PAIRING OK

Connected

Press the ENTER Key.

Press and hold the Left and Right buttons and the pedal at the same time.

The control unit makes a beep and then "OK" will appear. Pairing is done. Make sure that the device is connected.

Press the CANCEL Key to return to the normal screen.

▼ Osseo 100+

Power ON

At least 3 sec.

"PA" is displayed.

PAIRING OK

Connected

Press the operating key to turn on the power.

Press and hold the operating key.

The control unit makes a beep and then "OK" will appear. Pairing is done. Make sure that the device is connected.

Press the CANCEL Key to return to the normal screen.

▼ VarioSurg 3

Connect the link cable beforehand.

Turn on the power.

Press and hold the button.

When the LED turns blue, release the button.

PAIRING OK

Connected

The control unit makes a beep and then "OK" will appear. Pairing is done. Make sure that the device is connected. Also the LED of link module turns green.

Press the CANCEL Key to return to the normal screen.

▼ VarioSurg 4

At least 2 sec.

PAIRING LK

LINK

Press and hold the Setting key. "BLE SET" is displayed.

Press the Enter key.

Press the PROGRAM key to select "LK".

"LK" and "LINK" flash.

Press the Enter key. "PAIRING" and "LK" are illuminated. and "VARIOSURG" flash.

PAIRING OK

Connected

Pairing is successful when this product beeps and device displays "OK". Make sure is displayed and the device is connected.

Press the CANCEL Key to return to the normal screen.

PAIRING OK

Connected

Pairing is successful when this product beeps and device displays "OK". Make sure is displayed and the device is connected.

Press the Cancel key to return to the normal screen.

▼ External terminal

Launch the App.

Touch the icon.

Touch "Start".

Enter the code "123456" and touch "Pair".

PAIRING OK

Connected

The control unit makes a beep and then "OK" will appear. Pairing is done. Make sure that the device is connected.

Press the CANCEL Key to return to the normal screen.

2025-09-11 XXXXXXXX XXX